



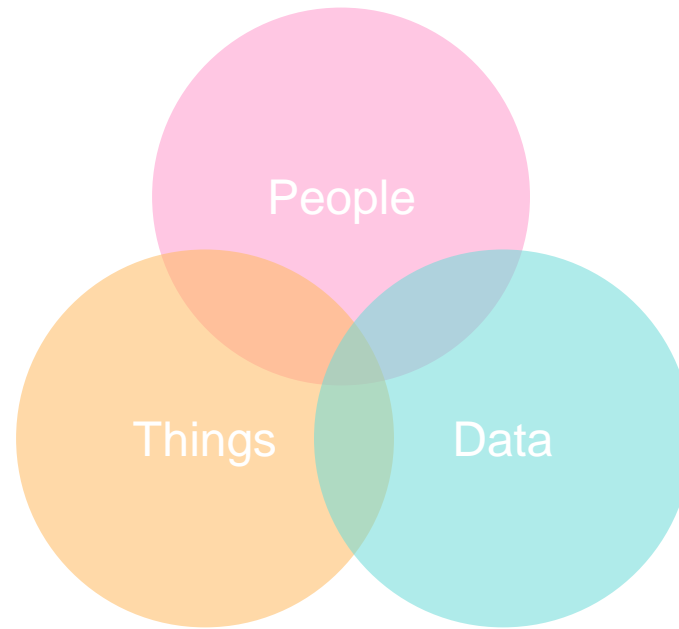
# Ryobi Lao mobilizes the power of the Ryobi Group, and makes efforts on enrichment in Lao

Introduction to Ryobi Lao

2019年6月27日

**Ryobi Lao Co., Ltd.**





**Company 52**

**Employee 9,400**

# Bus Taxi



# Ship



# Transport



# Apartment



## Business supporting the Ryobi Group



Transportation and Tourism Group



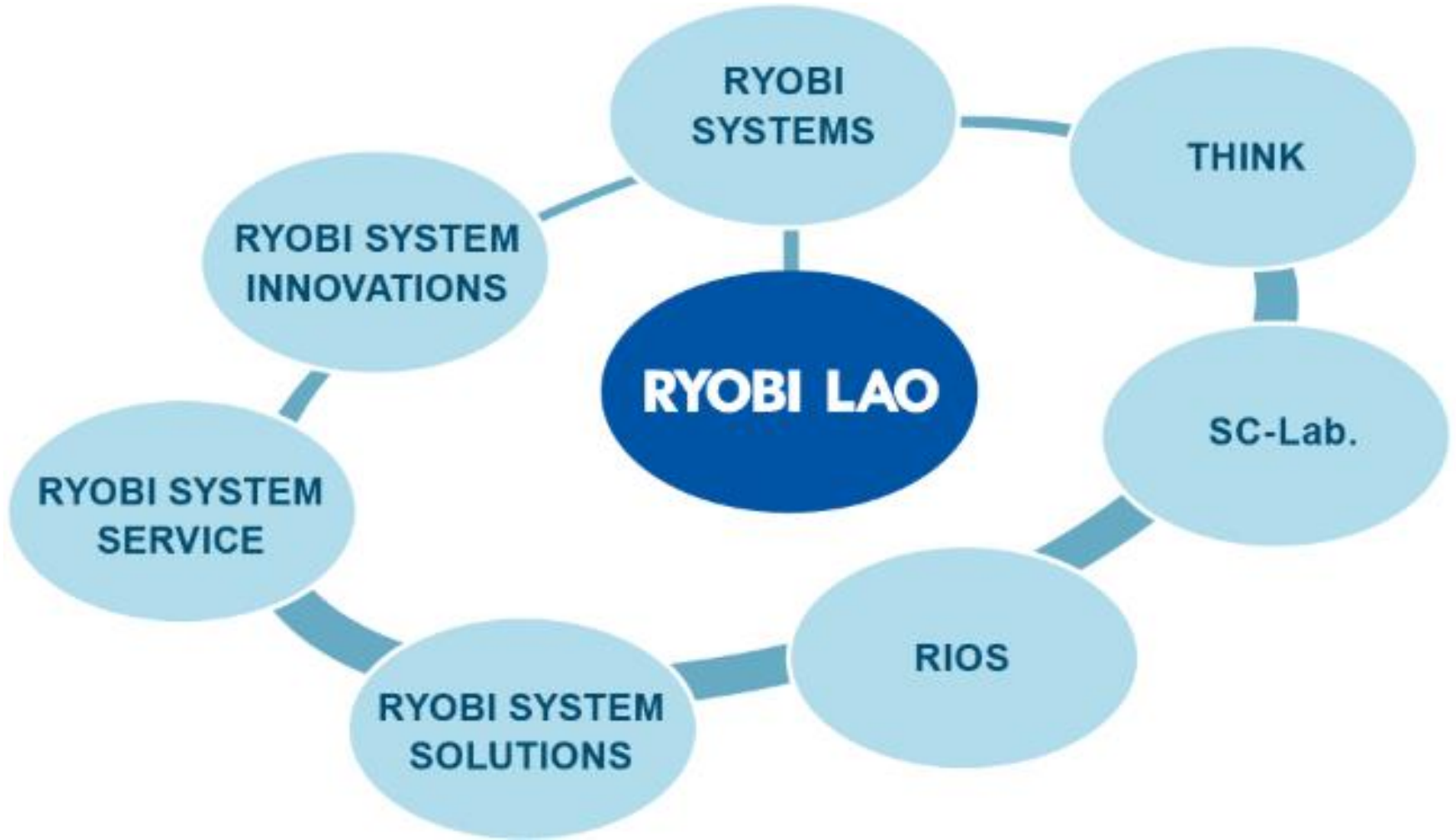
Urban Development Group



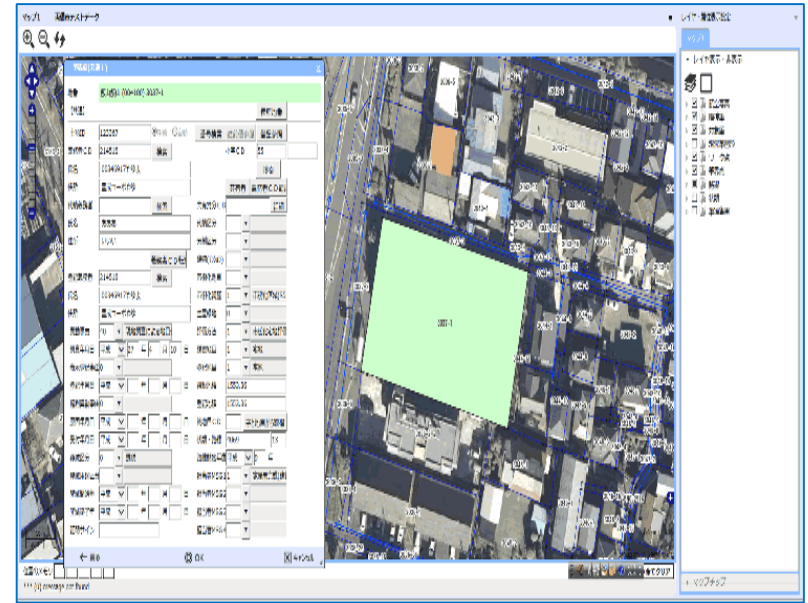
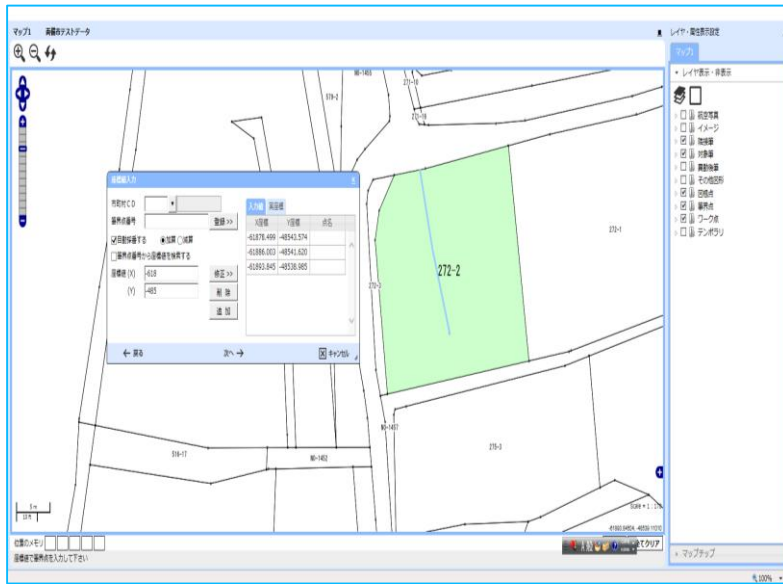
Total Life Services Group



ICT Group

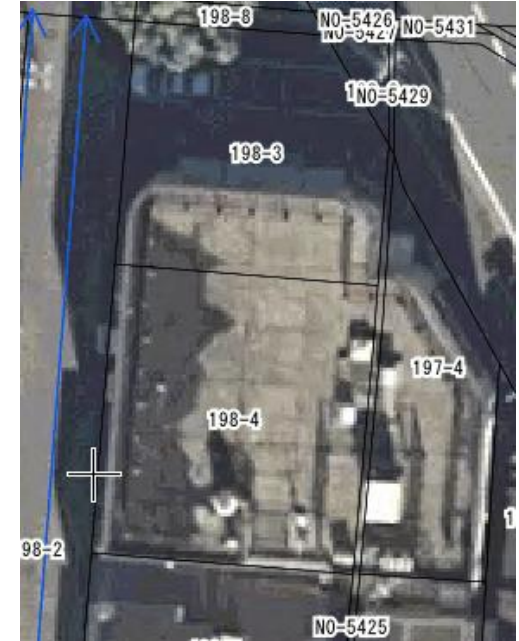
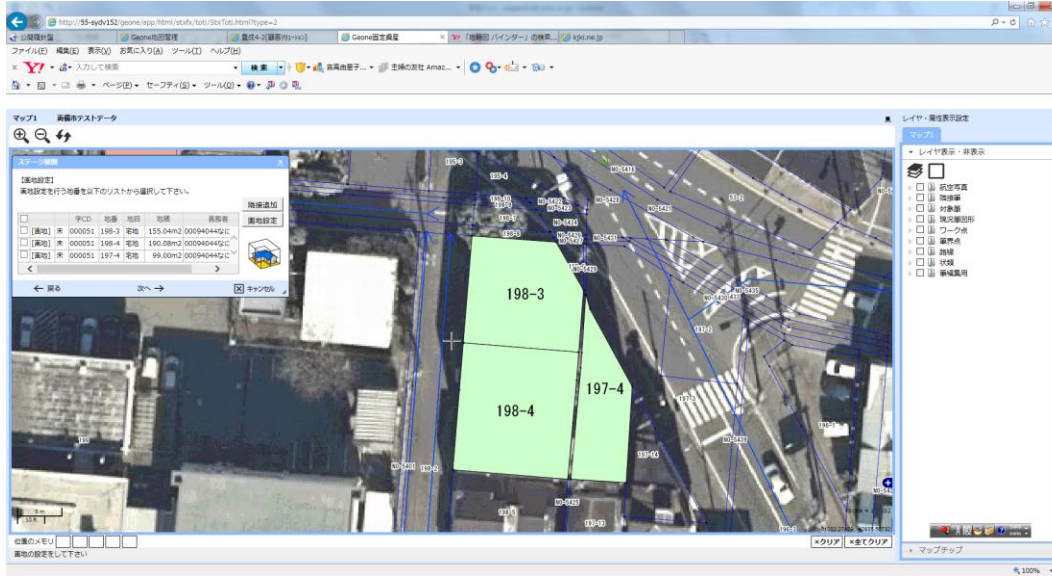


# Mapping System



# Mapping System

## Mapping System for Land TAX



納税決定(の)土地増補正

地番	地目	地積	全選択
未	080 宅地	284.28	全解除
未	030 宅地	131.78	登録

補正率表名	昭和83	平成09	平成08	平成08	平成08	平成12	平成15	平成16	平成21	平成24	平成27	平成30	平成33
土地増補正率	0.00	0.510	0.520	0.530	0.540	0.550	0.560	0.570	0.580				
加算率	0.000	0.000	0.000	0.000	0.000	0.000	0.000	0.000	0.000				
控除率	0.000	0.000	0.000	0.000	0.000	0.000	0.000	0.000	0.000				
平均地	0.000	0.000	0.000	0.000	0.000	0.000	0.000	0.000	0.000				
土地増補正率	0.000	0.000	0.000	0.000	0.000	0.000	0.000	0.000	0.000				
納税増補正	0.000	0.000	0.000	0.000	0.000	0.000	0.000	0.000	0.000				
特別補正													
地積増補正													

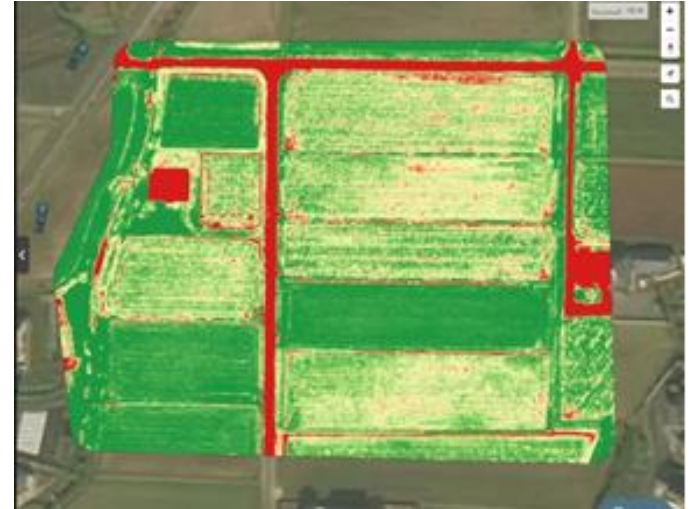
【調整補正】 参照地番

昭和83	平成04	平成08	平成12	平成15	平成18	平成21	平成24	平成27	平成30	平成33
基準年+1年										
基準年+2年										



# Mapping System

## Mapping System for Agriculture (planting)

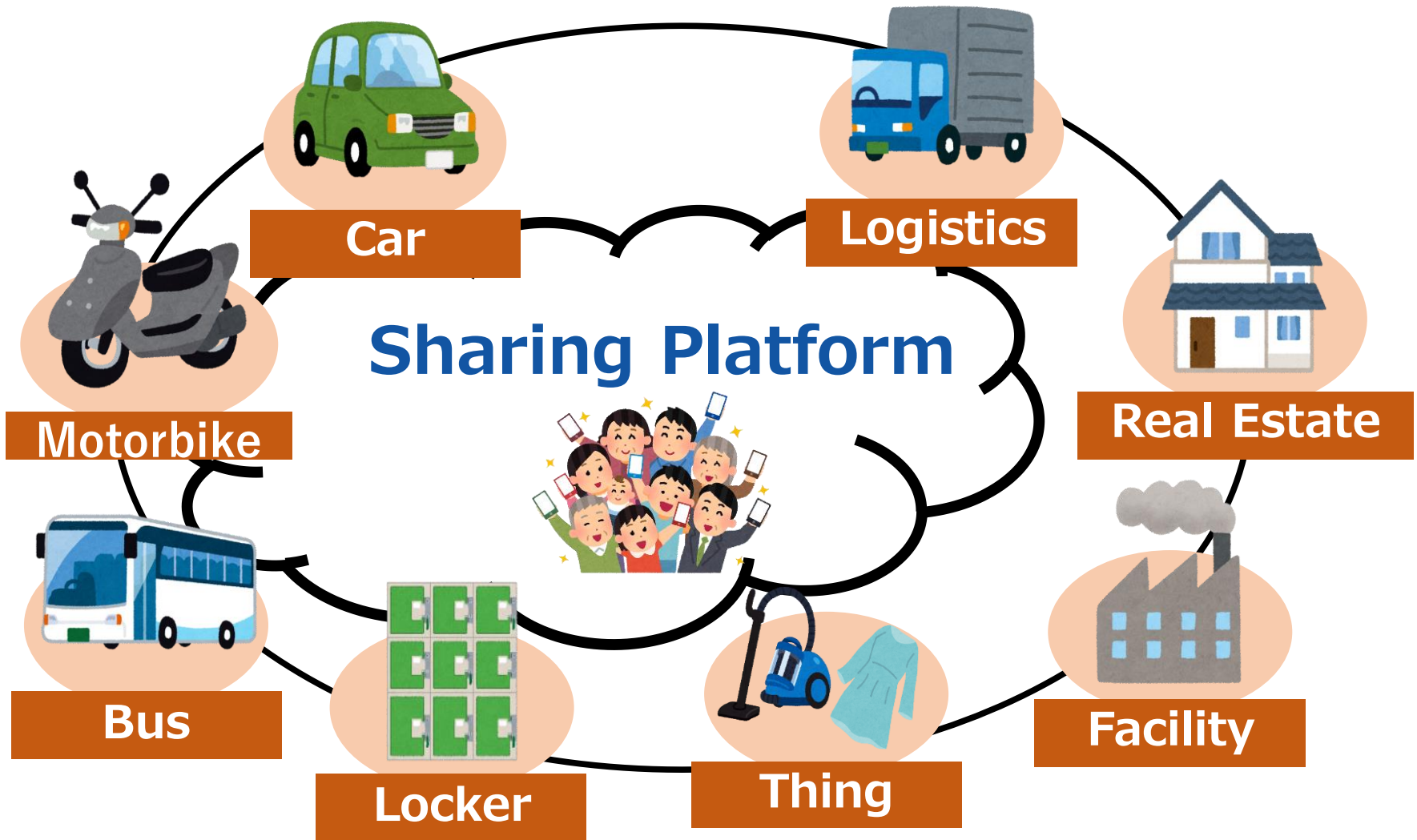


## Mapping System for Emergency call

The screenshot shows a web browser window displaying the Net119 2.0 website. The page title is "聴覚・言語障害者向け緊急通報システム Net119 2.0". Below the title, there is a paragraph of text explaining the system. The main content area is titled "通報イメージ" (Reporting Image) and features a flowchart illustrating the emergency reporting process. The flowchart starts with a user terminal (smartphone) where a user presses a red button labeled "通報する" (Report). This leads to a screen with "通報確認" (Report Confirmation) buttons for "通報" (Report) and "キャンセル" (Cancel). The next step is a map screen for location selection, followed by a "チャット機能" (Chat Function) screen. The process concludes with a "通報あり" (Report Received) notification at the fire station (消防本部). A red arrow at the bottom indicates that the system is used by users with hearing or language disabilities to call for fire or ambulance services.

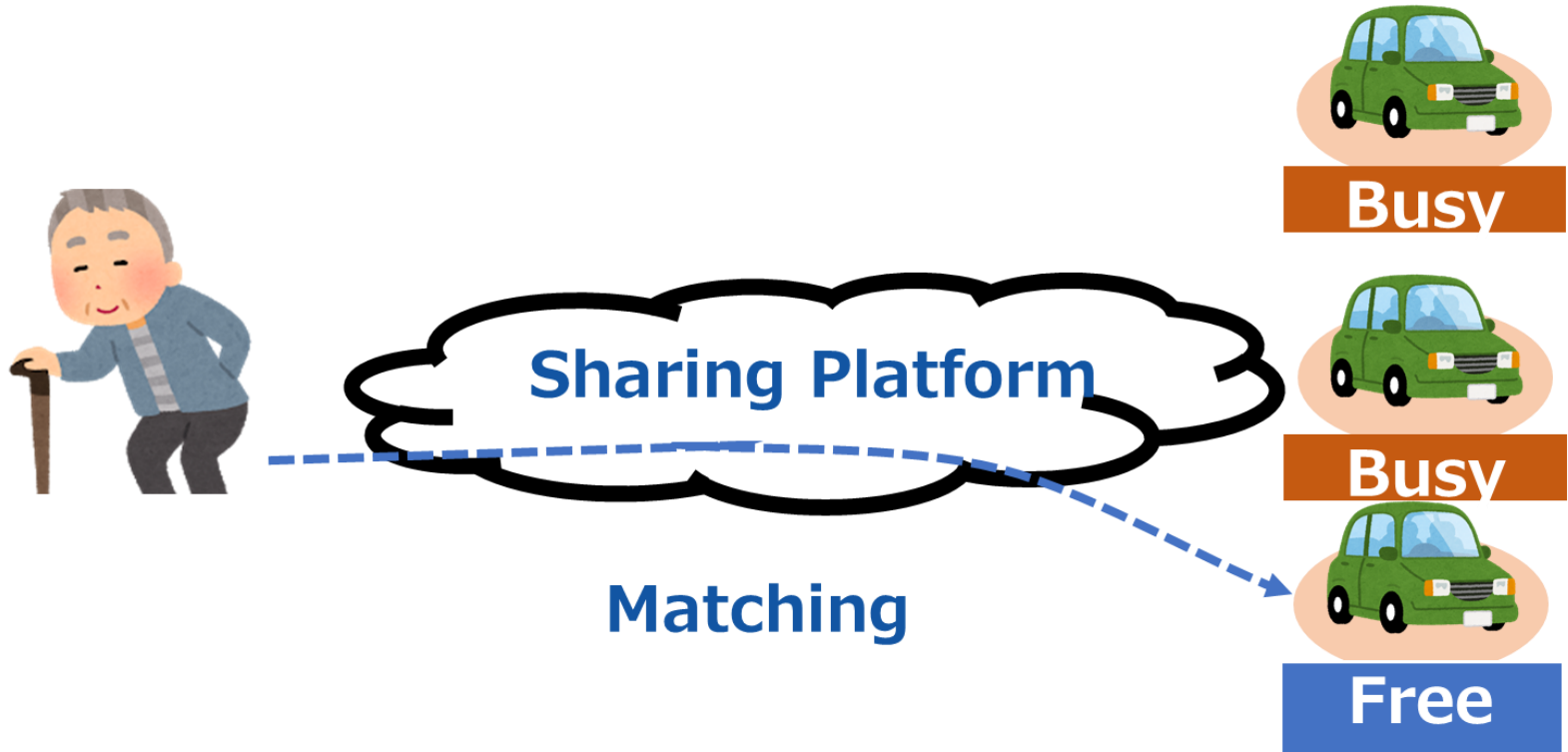
「Net119 2.0」緊急通報システムでできること

# Sharing System



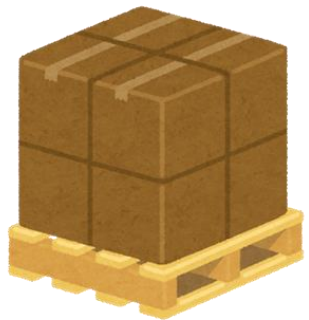
# Sharing System

Walker × Car Owner



# Sharing System

Send luggage × Driver

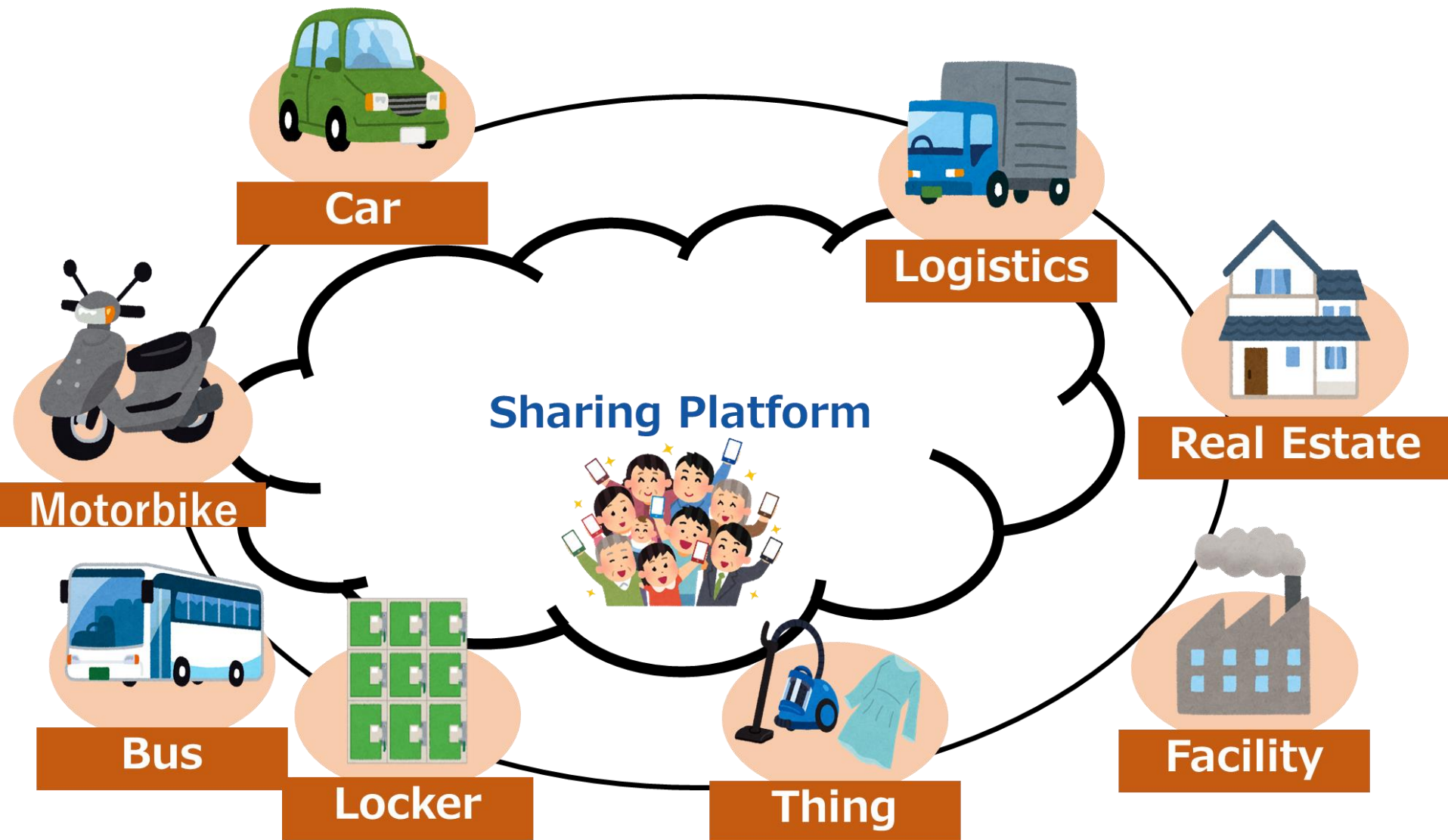


Matching

## Your Business



# Sharing System



# Groupware



**ezEKP ezWorkSpace ezUC ezMobile ezKMS ezDMS ezSafer ezSearch**

# Groupware



