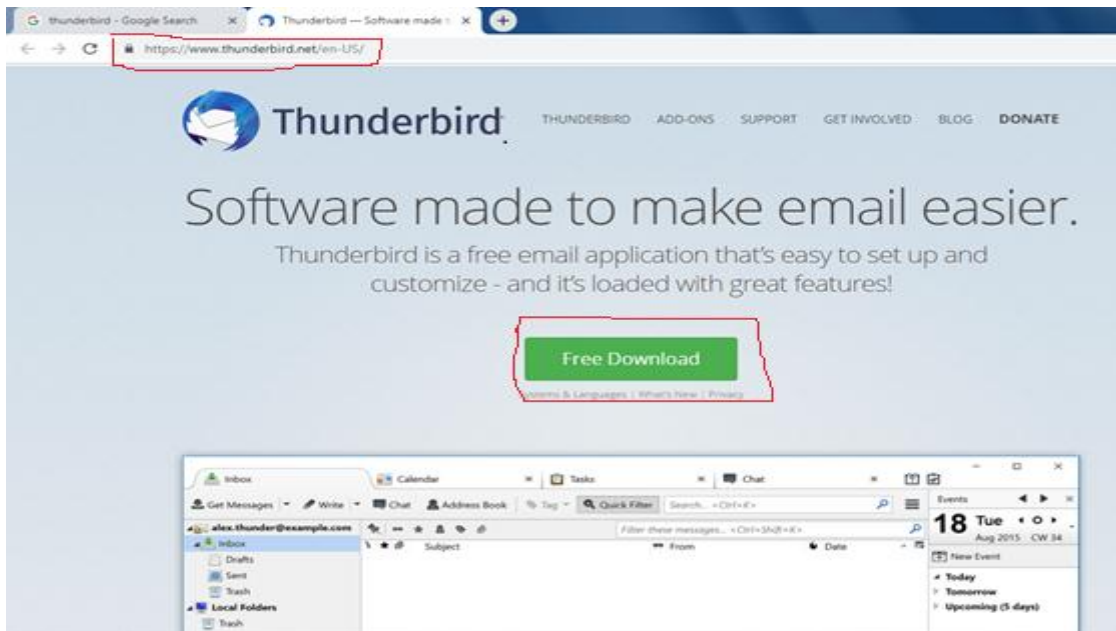


ຄູ່ມືການຕິດຕັ້ງເມວກະຊວງ ປທສ ໃນໂປຼແກຼມ thunderbird

1. ເຂົ້າເວັບບລາວເຊີ

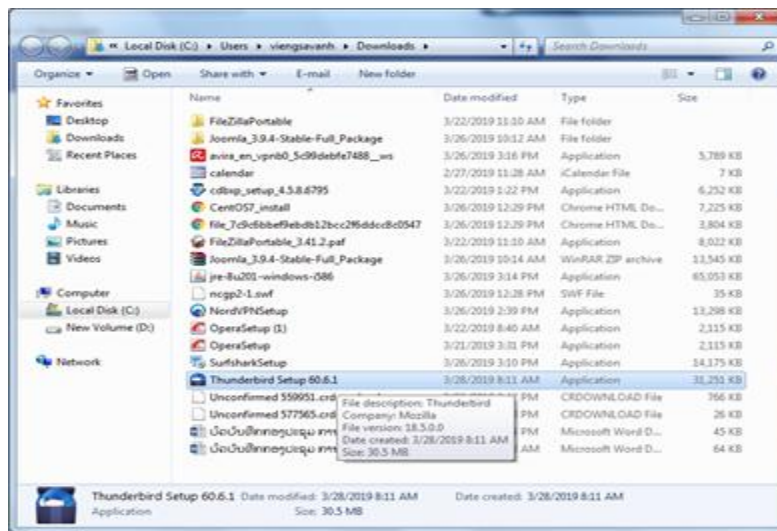
- ໃນຊ່ອງ URL ໃຫ້ປ້ອນຂໍ້ມູນ <https://www.thunderbird.net/en-US/>
- ແລ້ວກົດທີ່ປຸ່ມ Free Download



- ລໍຖ້າຈົນດາວໂຫຼດສໍາເລັດ

2. ຂັ້ນຕອນການຕິດຕັ້ງໂປຼແກຼມ

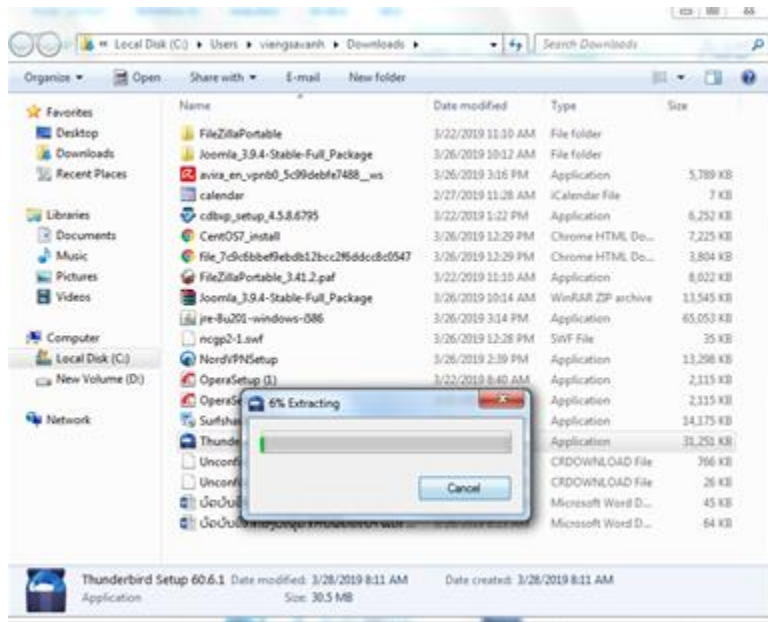
- Double Click ໃສ່ໂປຼແກຼມ thunderbird



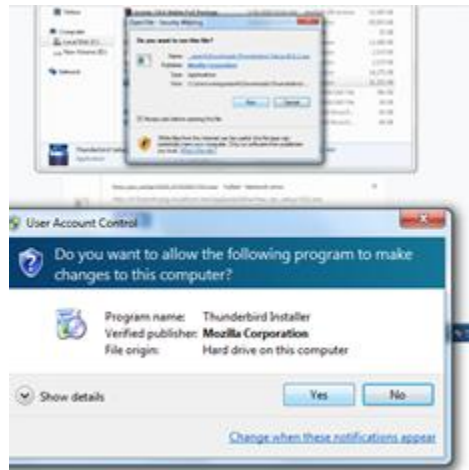
- ຈະປາກົດໜ້າຕ່າງ Open-File Security Warning
- ກົດປຸ່ມ Run



- ລໍຖ້າໃຫ້ໂປຼແກຼມ Extracting ຈົນສໍາເລັດ 100%



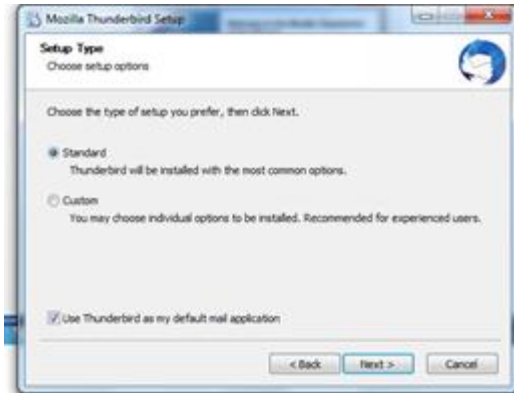
- ຈະປາກົດໜ້າຕ່າງ User Account Control
- ກົດ Yes



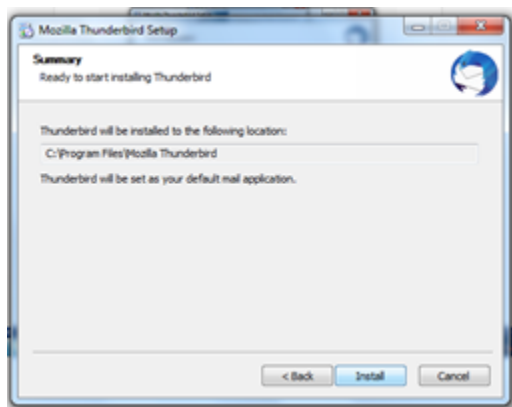
- ໃນໜ້າຕ່າງ Welcome to the Mozilla Thunderbird Setup Wizard
- ກົດປຸ່ມ Next



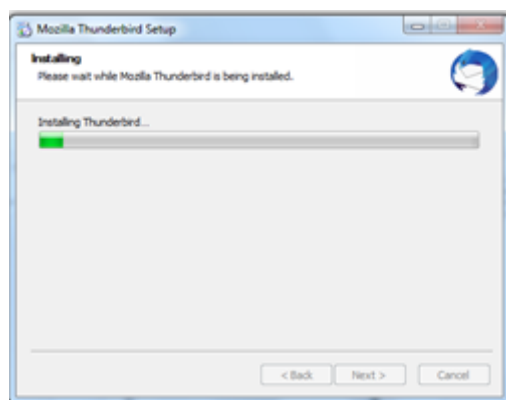
- Setup Type ໃຫ້ເລືອກ Standard ແລ້ວກົດ Next



- Summary ໃຫ້ເລືອກ Path ທີ່ຕ້ອງການຕິດຕັ້ງ ແລ້ວກົດ Install



- ລໍຖ້າການຕິດຕັ້ງ

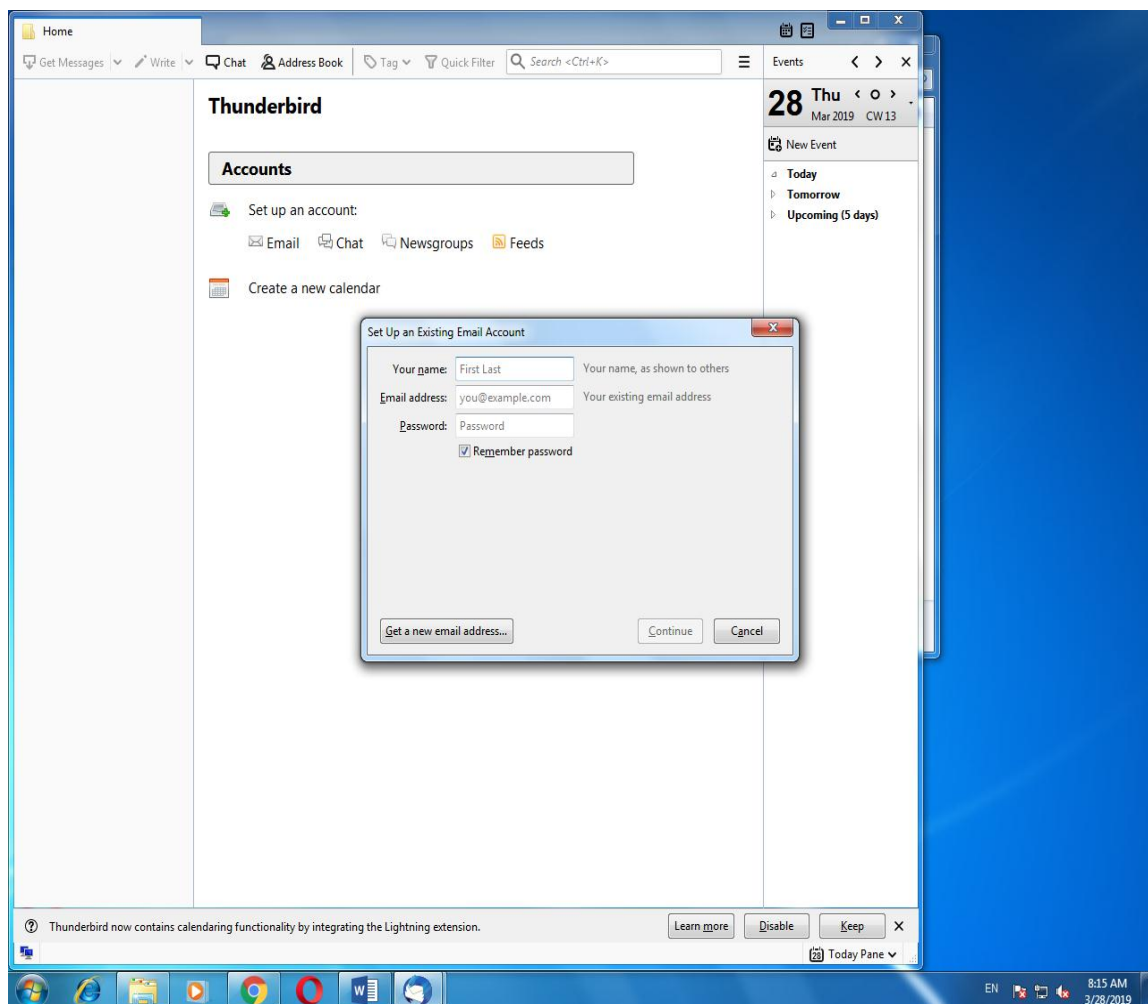


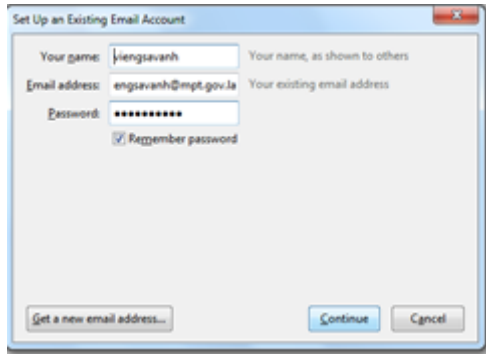
- ເມື່ອໂປຼແກຼມຕິດຕັ້ງສໍາເລັດແລ້ວໃຫ້ກົດ Finish



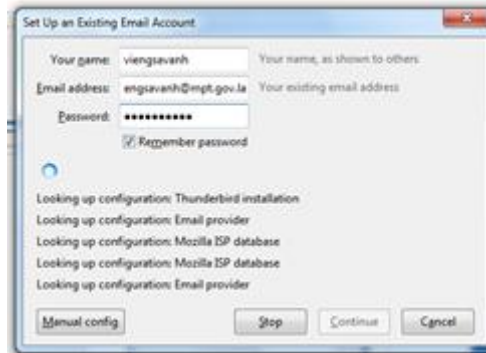
3. ຂັ້ນຕອນການຕັ້ງຄ່າ ໂປຼແກຼມ thunderbird

- ໃນໜ້າຕ່າງຂອງ Set Up an Existing Email Account ໃຫ້ໃສ່ຊື່ອີເມວ ແລະ ລະຫັດຜ່ານໃຫ້ຖືກຕ້ອງ ຈາກນັ້ນກົດ Continue



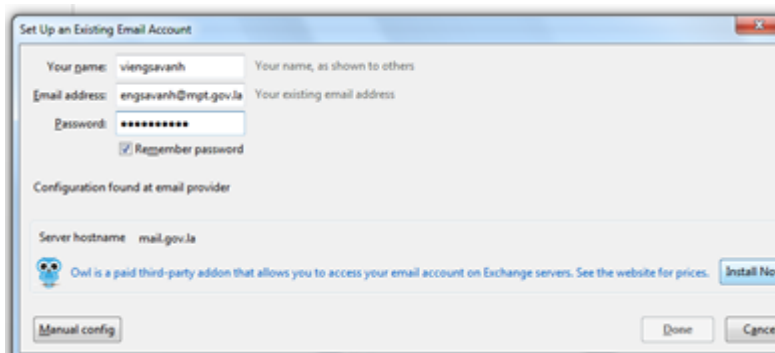


- ໂປຼແກຼມຈະເຮັດກາກວດຫາ Server Email

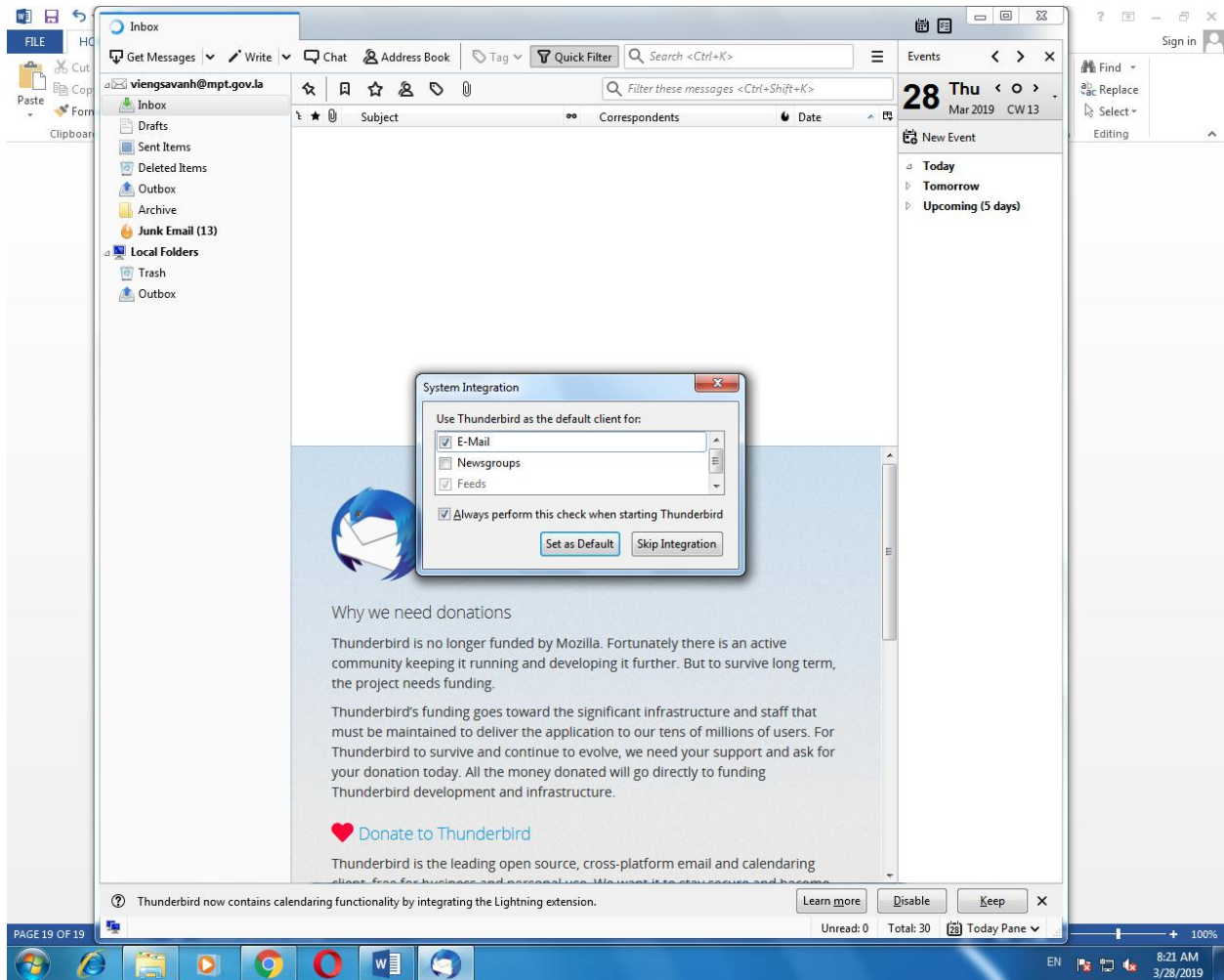
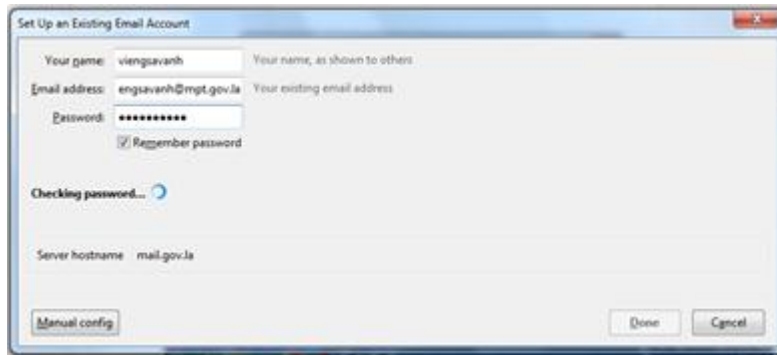


4. ການຕັ້ງຄ່າຈະແປງອອກເປັນ 2 ວິທີຄື

- ວິທີ1 ການຕັ້ງຄ່າແບບ Auto
 - ເມື່ອໂປຼແກຼມກວດຫາ Server Email ແລ້ວ
 - ໃຫ້ສັງເກດທີ່ຫົວຂໍ້ Server Hostname mail.gov.la ຈະມີປຸ່ມ Install Now ທາງເບື້ອງຂາວມືໃຫ້ກົດ ປຸ່ມ Install Now



➤ ໂປຼແກຼມຈະກວດຫາ Server Email ອີກເທື່ອໜຶ່ງແລ້ວເຂົ້າສູ່ລະບົບແບບອັດຕະໂນມັດ

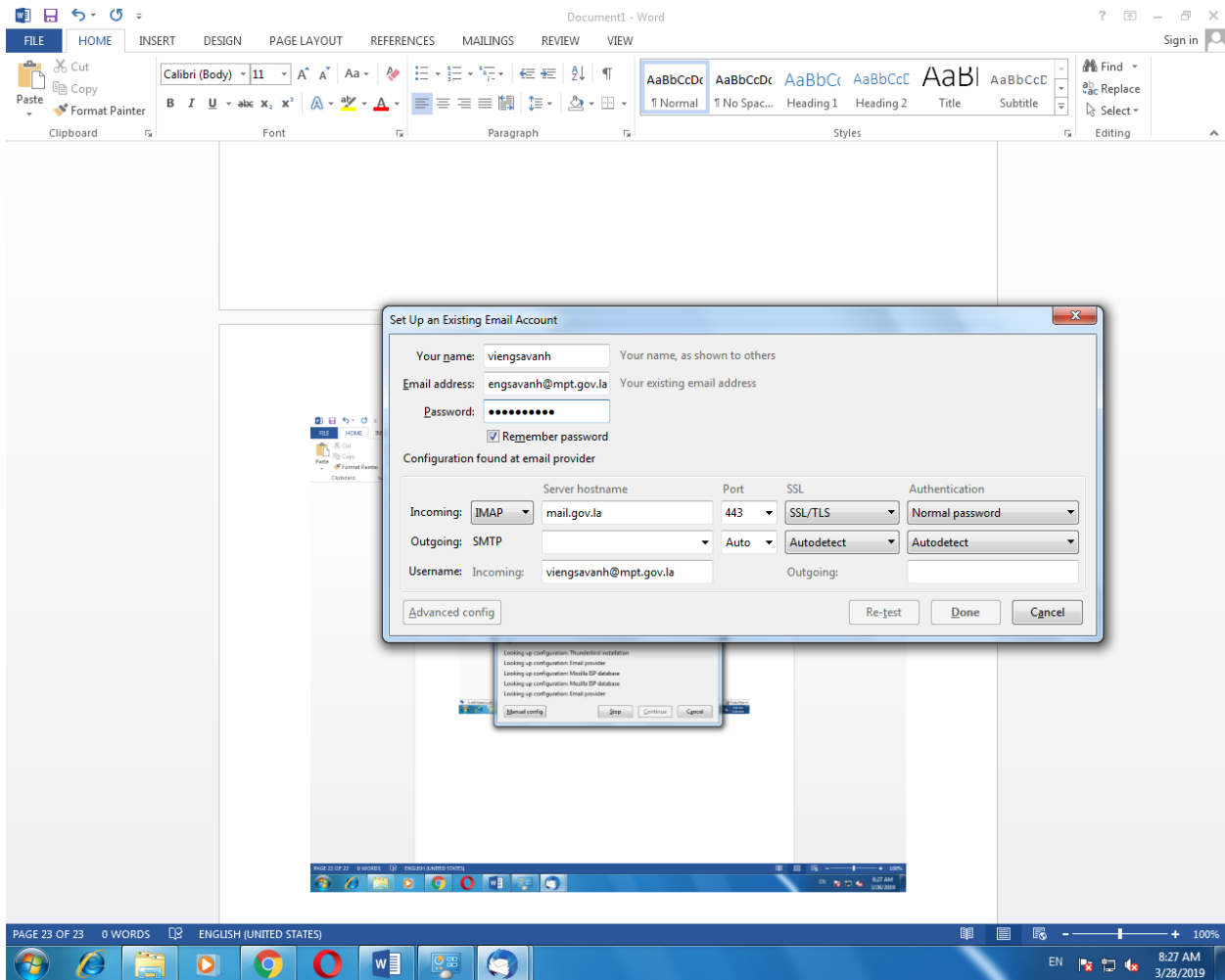


- ວິທີ 2 ແມ່ນການຕັ້ງຄ່າແບບ Manual

- ໃຫ້ກົດປຸ່ມ Manual Config



- ໃຫ້ຕັ້ງຄ່າ Incoming IMAP ແລະ Outgoing SMTP

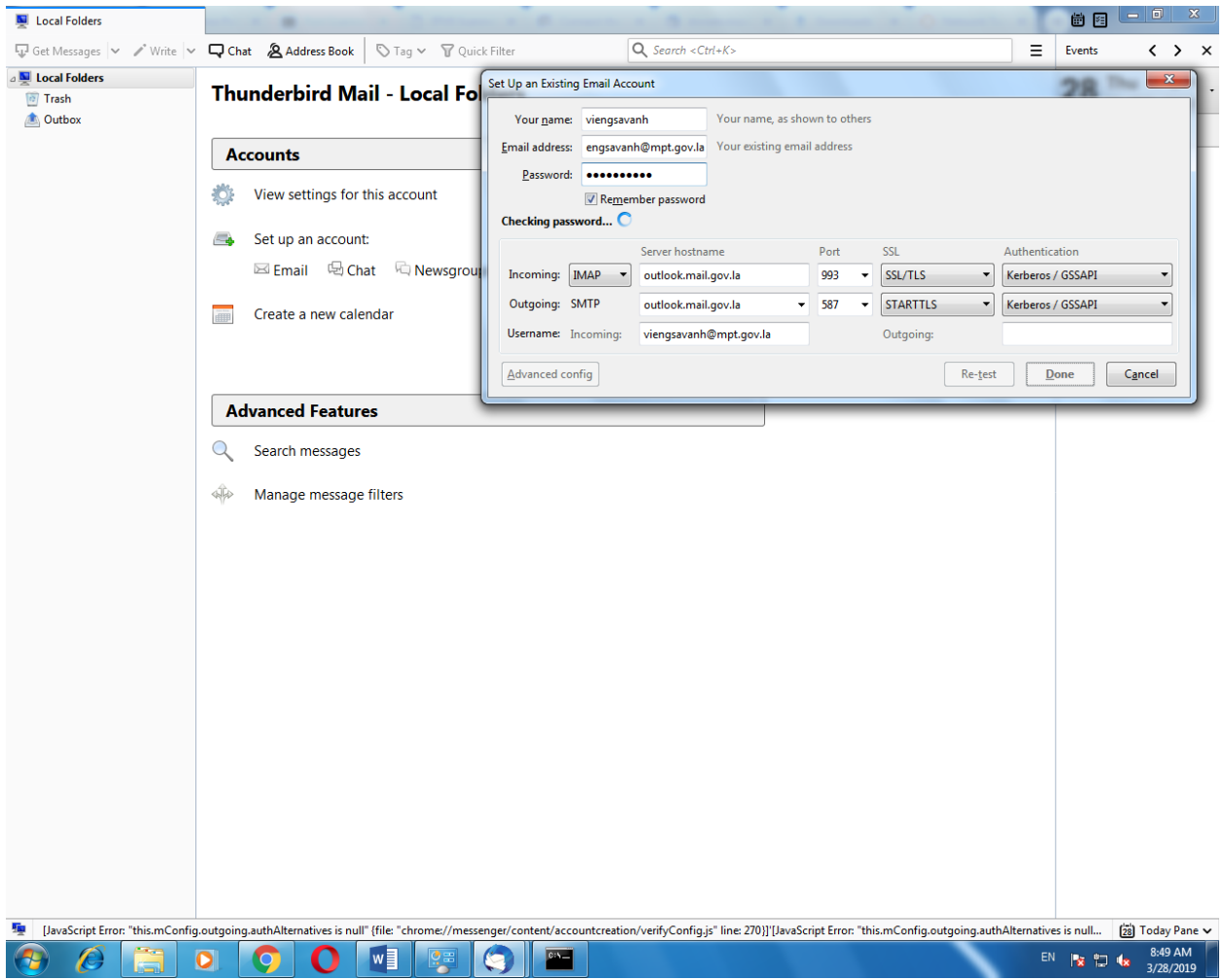


- ໃຫ້ກຳນົດຄ່າຕາມຮູບຂ້າງລຸ່ມນີ້
- Incoming IMAP : outlook.mail.gov.la, Port: 993, SSL: SSL/TLS
- Outgoing SMTP : outlook.mail.gov.la, Port: 587, SSL: STARTTLS



- ແລ້ວກົດປຸ່ມ Re-test ແລ້ວລໍຖ້າຫາກມີຂໍ້ຄວາມ The Following setting were found by probing the give server ຂຶ້ນມາ ຫຼັງຈາກນັ້ນກົດ Done
- ສຳເລັດການຕິດຕັ້ງເມວກະຊວງ ປທສ ໃນໂປຼແກຼມ thunderbird





The screenshot shows the Mozilla Thunderbird email client interface. The main window displays an email from `viengsavanh@mpt.gov.la` with the subject "Correspondents". A "System Integration" dialog box is open in the center, asking to use Thunderbird as the default client for E-Mail, Newsgroups, and Feeds. The "E-Mail" and "Feeds" options are checked, and the checkbox "Always perform this check when starting Thunderbird" is also checked. The dialog has "Set as Default" and "Skip Integration" buttons.

The background email content includes a section titled "Why we need donations" with the following text:

Thunderbird is no longer funded by Mozilla. Fortunately there is an active community keeping it running and developing it further. But to survive long term, the project needs funding.

Thunderbird's funding goes toward the significant infrastructure and staff that must be maintained to deliver the application to our tens of millions of users. For Thunderbird to survive and continue to evolve, we need your support and ask for your donation today. All the money donated will go directly to funding Thunderbird development and infrastructure.

Below the text is a red heart icon followed by the link "Donate to Thunderbird".

At the bottom of the email, there is a notification: "Thunderbird now contains calendaring functionality by integrating the Lightning extension." with buttons for "Learn more", "Disable", and "Keep".

The system tray at the bottom shows the date and time as 8:21 AM on 3/28/2019, along with system icons for network, volume, and battery.